

\$539,600 - 268 Waterford Heath, Chestermere

MLS® #A2209154

\$539,600

4 Bedroom, 3.00 Bathroom, 1,565 sqft

Residential on 0.07 Acres

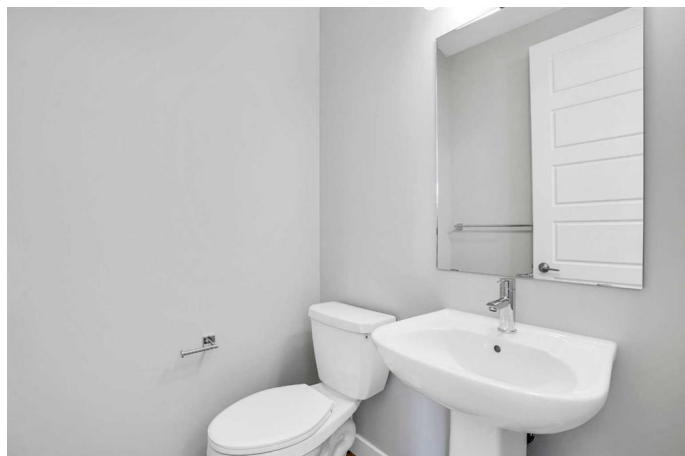
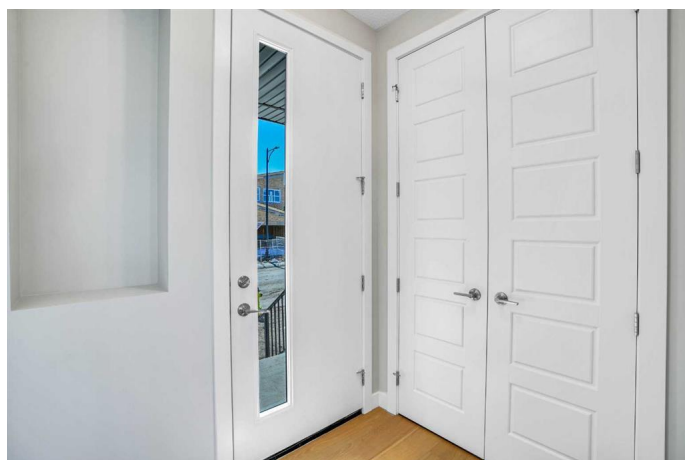
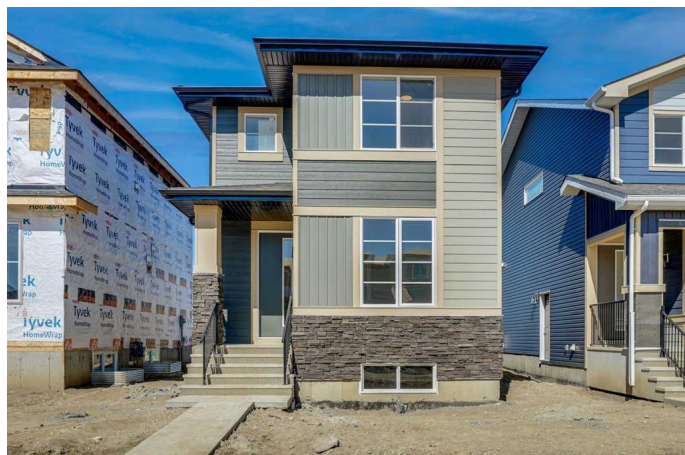
NONE, Chestermere, Alberta

Welcome to this stunning 4-bedroom home located in the highly sought-after Waterford community of Chestermere. Thoughtfully designed with modern finishes and elegant touches throughout, this home offers the perfect blend of luxury style and functionality.

The main floor features soaring 9ft ceilings, 8ft doors, a large Main floor Bedroom with large windows, and striking black and gold light fixtures. A cozy electric fireplace anchors the spacious living room, while the chef-inspired kitchen impresses with dual-tone cabinetry, gold hardware, a centre island, and a French door refrigerator. A spacious dining room is conveniently located across the kitchen. Large windows flood the space with natural light, while the electric fireplace in the living room creates a cozy, inviting atmosphere. A convenient mudroom at the back offers added versatility.

Upstairs, the upgraded staircase with elegant railing leads to a spacious primary retreat complete with a 4-piece En-suite featuring dual sinks, a fully tiled walk-in shower, and a large walk-in closet. Two additional good-sized bedrooms, a 4-piece bathroom, and a convenient upper-level laundry room complete this floor.

The unfinished basement with two egress windows and a separate side entrance offers endless possibilities for future development.



Located close to parks, schools, shopping, and all amenities, this is your opportunity to own a brand new home in one of Chestermere's most desirable communities. All seasonal work (Parking Pad, Concrete Pathway/sidewalk , front Landscaping and Grading) will be completed by the builder.

Built in 2025

Essential Information

| | |
|----------------|-------------|
| MLS® # | A2209154 |
| Price | \$539,600 |
| Bedrooms | 4 |
| Bathrooms | 3.00 |
| Full Baths | 2 |
| Half Baths | 1 |
| Square Footage | 1,565 |
| Acres | 0.07 |
| Year Built | 2025 |
| Type | Residential |
| Sub-Type | Detached |
| Style | 2 Storey |
| Status | Active |

Community Information

| | |
|-------------|---------------------|
| Address | 268 Waterford Heath |
| Subdivision | NONE |
| City | Chestermere |
| County | Chestermere |
| Province | Alberta |
| Postal Code | T1X 2Z6 |

Amenities

| | |
|----------------|-------------|
| Parking Spaces | 2 |
| Parking | Parking Pad |

Interior

| | |
|-------------------|--|
| Interior Features | Chandelier, Double Vanity, French Door, High Ceilings, Kitchen Island, Open Floorplan, Recessed Lighting |
| Appliances | Dishwasher, Electric Range, Microwave Hood Fan, Refrigerator |
| Heating | Central, High Efficiency, Forced Air, Natural Gas |
| Cooling | None |
| Fireplace | Yes |
| # of Fireplaces | 1 |
| Fireplaces | Circulating, Decorative, Electric, Family Room |
| Has Basement | Yes |
| Basement | Exterior Entry, Full, Unfinished |

Exterior

| | |
|-------------------|---------------------------|
| Exterior Features | Private Yard |
| Lot Description | City Lot, Rectangular Lot |
| Roof | Asphalt Shingle |
| Construction | Vinyl Siding, Wood Frame |
| Foundation | Poured Concrete |

Additional Information

| | |
|----------------|-----------------|
| Date Listed | April 7th, 2025 |
| Days on Market | 11 |
| Zoning | R1-P |

Listing Details

| | |
|----------------|-----------------|
| Listing Office | URBAN-REALTY.ca |
|----------------|-----------------|

Data is supplied by Pillar 9â„¢ MLS® System. Pillar 9â„¢ is the owner of the copyright in its MLS® System. Data is deemed reliable but is not guaranteed accurate by Pillar 9â„¢. The trademarks MLS®, Multiple Listing Service® and the associated logos are owned by The Canadian Real Estate Association (CREA) and identify the quality of services provided by real estate professionals who are members of CREA. Used under license.