

\$679,713 - 140 Emerald Drive, Red Deer

MLS® #A2209051

\$679,713

3 Bedroom, 3.00 Bathroom, 1,983 sqft
Residential on 0.09 Acres

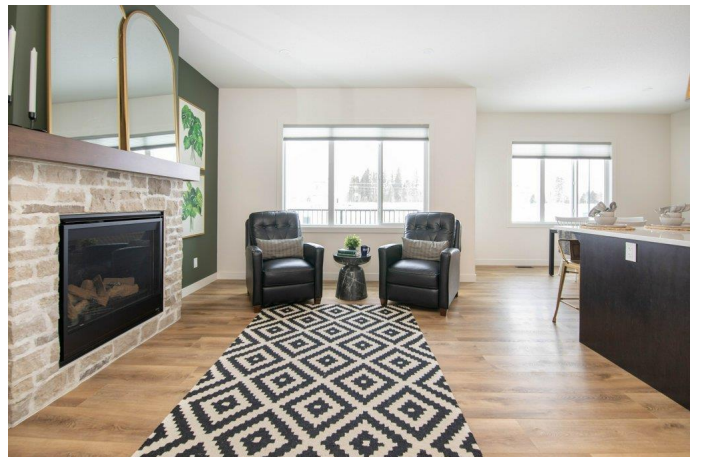
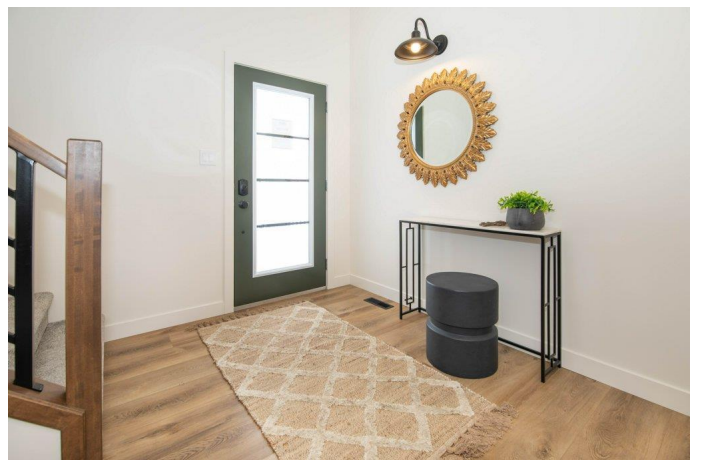
Evergreen, Red Deer, Alberta

Stunning is the best way to describe True-Line Homes Newest Red Deer Show Home!!! The Interior Decorators really out did it on this Stunning Executive Home! Gorgeous Upgraded Kitchen with Quartz Countertops, Stunning Cabinetry , Stainless Steel Appliance Package, Great room with Stunning Stone Facing Fireplace, Primary Bedroom with large walk-in closet, gorgeous 5 piece ensuite with 5' Soaker Tub and 4' Glass Fully Tiled Shower,, Attached Garage with one side 34' long! with 220 and dry sump, Sunstop Low E argon filled windows, R50 Insulation, 9' ceilings on the main floor and 8' on the upper floor, Limited Lifetime Architectural Shingles, and a 10 year New Home Warranty! If you love QUALITY, this is your home!

Built in 2023

Essential Information

MLS® #	A2209051
Price	\$679,713
Bedrooms	3
Bathrooms	3.00
Full Baths	2
Half Baths	1
Square Footage	1,983
Acres	0.09
Year Built	2023
Type	Residential



Sub-Type	Detached
Style	2 Storey
Status	Active

Community Information

Address	140 Emerald Drive
Subdivision	Evergreen
City	Red Deer
County	Red Deer
Province	Alberta
Postal Code	T4P 3G7

Amenities

Parking Spaces	4
Parking	220 Volt Wiring, Concrete Driveway, Double Garage Attached
# of Garages	2

Interior

Interior Features	Closet Organizers, Double Vanity, No Animal Home, No Smoking Home, Pantry, See Remarks
Appliances	Dishwasher, Microwave Hood Fan, Refrigerator, See Remarks, Stove(s)
Heating	High Efficiency, Forced Air, Natural Gas, In Floor Roughed-In
Cooling	None
Fireplaces	Gas, See Remarks, Stone
Has Basement	Yes
Basement	Unfinished, See Remarks

Exterior

Exterior Features	Private Yard
Lot Description	Back Yard, City Lot, Front Yard
Roof	Fiberglass, See Remarks
Construction	Concrete, See Remarks, Wood Frame
Foundation	Poured Concrete

Additional Information

Date Listed	April 6th, 2025
Days on Market	1
Zoning	R1

Listing Details

Listing Office

Realty Executives Alberta Elite

Data is supplied by Pillar 9â„¸ MLSÂ® System. Pillar 9â„¸ is the owner of the copyright in its MLSÂ® System. Data is deemed reliable but is not guaranteed accurate by Pillar 9â„¸. The trademarks MLSÂ®, Multiple Listing ServiceÂ® and the associated logos are owned by The Canadian Real Estate Association (CREA) and identify the quality of services provided by real estate professionals who are members of CREA. Used under license.