

# \$1,347,000 - 46 Durum Drive, Rural Wheatland County

MLS® #A2208393

**\$1,347,000**

0 Bedroom, 0.00 Bathroom,  
Land on 3.00 Acres

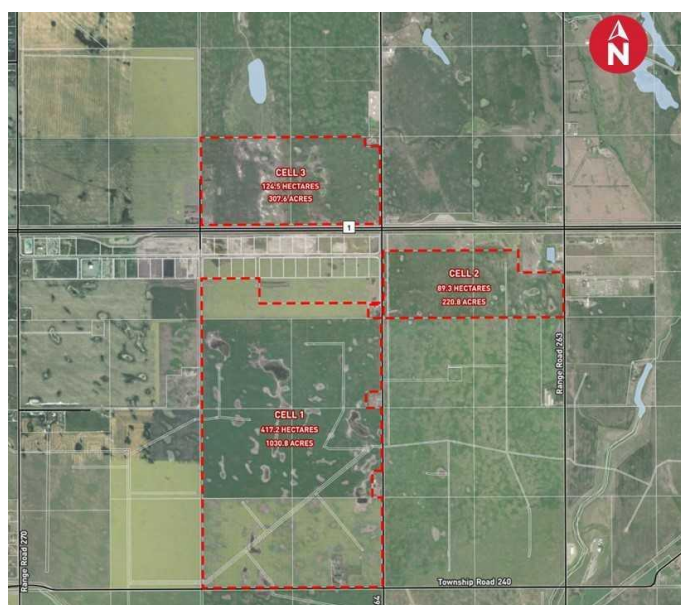
NONE, Rural Wheatland County, Alberta

Seize this exceptional opportunity to secure a premium 3-acre industrial lot, perfectly positioned for maximum visibility and accessibility on pavement from Highway 1. Located in an area poised for significant growth, this property is a strategic investment in a rapidly expanding region. Adjacent to the upcoming De Havilland Field, the future hub for Canadian aircraft assembly and production, employing 1,500 people. Competitive taxes, significantly lower than properties within Calgary, enhance the financial appeal of this investment. Services are now located nearby and easily brought on site. Invest in Lot 17 Durum Drive today and position your business for success in one of the most promising industrial zones in Rural Wheatland County. Donâ€™t miss out on this unparalleled opportunity to capitalize on the regionâ€™s growth and development

## Essential Information

MLS® #	A2208393
Price	\$1,347,000
Bathrooms	0.00
Acres	3.00
Type	Land
Sub-Type	Industrial Land
Status	Active

## Community Information



Address	46 Durum Drive
Subdivision	NONE
City	Rural Wheatland County
County	Wheatland County
Province	Alberta
Postal Code	T0J1X0

### **Additional Information**

Date Listed	April 3rd, 2025
Days on Market	15
Zoning	410

### **Listing Details**

Listing Office	Royal LePage METRO
----------------	--------------------

Data is supplied by Pillar 9â„¢ MLSÂ® System. Pillar 9â„¢ is the owner of the copyright in its MLSÂ® System. Data is deemed reliable but is not guaranteed accurate by Pillar 9â„¢. The trademarks MLSÂ®, Multiple Listing ServiceÂ® and the associated logos are owned by The Canadian Real Estate Association (CREA) and identify the quality of services provided by real estate professionals who are members of CREA. Used under license.