

\$575,000 - 686 Lacombe Street, Pincher Creek

MLS® #A2207854

\$575,000

2 Bedroom, 1.00 Bathroom, 1,130 sqft

Residential on 0.17 Acres

NONE, Pincher Creek, Alberta

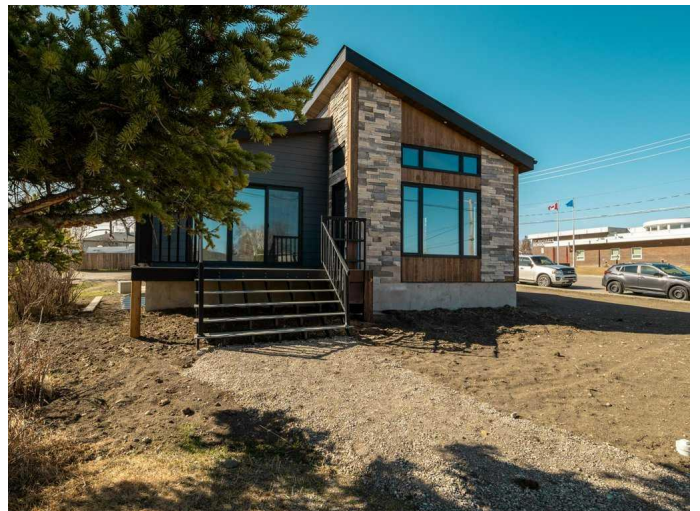
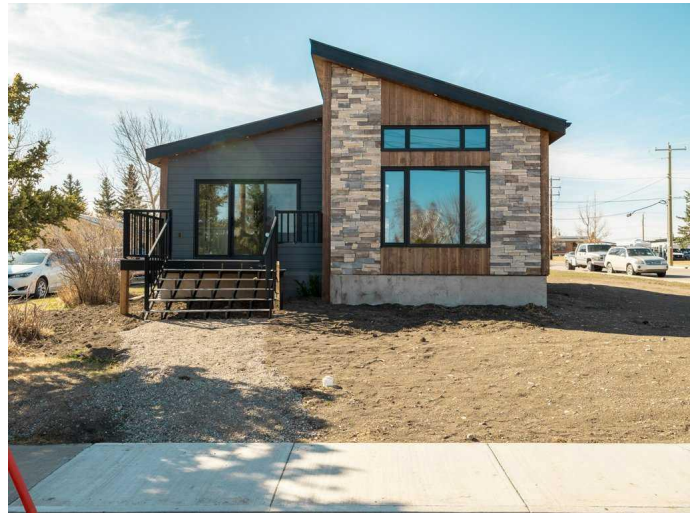
Discover pure sophistication in this brand-new 1,130 sq ft, 2-bed, 1-bath home—where luxury meets limitless potential. The open-concept layout dazzles with high-end finishes: quartz countertops, solid wood doors, and warm wood accents throughout. Snuggle up next to the gas fireplace in the living room or unwind in the master suite with a walkout deck, ideal for stargazing or quiet evenings. The walk-up basement, framed and ready, can be finished by the builder—think cozy family haven or income suite, your call! within a stones throw of a school and playground, this makes it a great home for a growing family. With the corner lot and alley access, you can add a garage, fence in the yard and have an outdoor oasis. Perfect for entertaining or growing roots, this move-in-ready gem blends modern style with smart savings. Act fast—your forever home won't wait!

More photos to come!

Built in 2025

Essential Information

MLS® #	A2207854
Price	\$575,000
Bedrooms	2
Bathrooms	1.00
Full Baths	1
Square Footage	1,130
Acres	0.17



Year Built	2025
Type	Residential
Sub-Type	Detached
Style	Bungalow
Status	Active

Community Information

Address	686 Lacombe Street
Subdivision	NONE
City	Pincher Creek
County	Pincher Creek No. 9, M.D. of
Province	Alberta
Postal Code	T0K1W0

Amenities

Parking Spaces	2
Parking	Off Street

Interior

Interior Features	Closet Organizers, Stone Counters, Vaulted Ceiling(s), Walk-In Closet(s)
Appliances	Dishwasher, Microwave, Refrigerator, Stove(s)
Heating	Forced Air, Fireplace Insert
Cooling	None
Fireplace	Yes
# of Fireplaces	1
Fireplaces	Gas
Has Basement	Yes
Basement	Full, Partially Finished

Exterior

Exterior Features	Private Entrance
Lot Description	Back Lane, Back Yard, City Lot, Corner Lot, Street Lighting
Roof	Metal
Construction	Composite Siding, ICFs (Insulated Concrete Forms), Stone, Wood Siding
Foundation	ICF Block

Additional Information

Date Listed	April 2nd, 2025
-------------	-----------------

Days on Market 20
Zoning R1

Listing Details

Listing Office 2 PERCENT REALTY

Data is supplied by Pillar 9â„¢ MLSÂ® System. Pillar 9â„¢ is the owner of the copyright in its MLSÂ® System. Data is deemed reliable but is not guaranteed accurate by Pillar 9â„¢. The trademarks MLSÂ®, Multiple Listing ServiceÂ® and the associated logos are owned by The Canadian Real Estate Association (CREA) and identify the quality of services provided by real estate professionals who are members of CREA. Used under license.