

\$599,000 - 1148 Windhaven Close Sw, Airdrie

MLS® #A2205551

\$599,000

4 Bedroom, 4.00 Bathroom, 1,773 sqft

Residential on 0.07 Acres

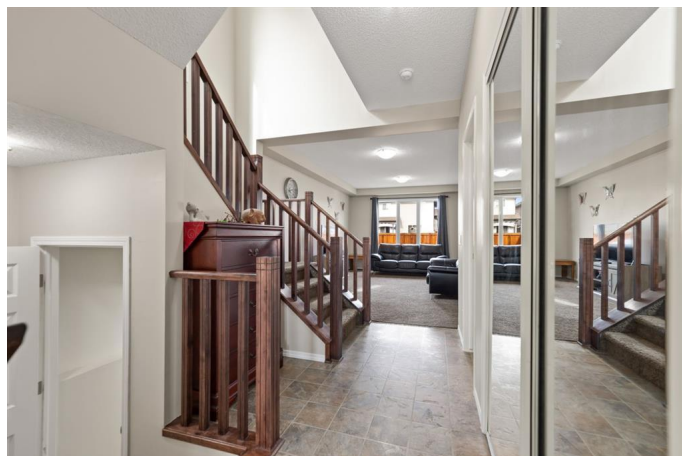
Windsong, Airdrie, Alberta

"Back to the Market, Due to Financing Condition". Welcome to this beautiful 1,773 sq. ft. home nestled in the sought-after community of Windsong, Airdrie AB. Built in 2010, this meticulously maintained front-garage home offers the perfect blend of comfort and convenience. With 3 spacious bedrooms and 2.5 baths above grade, the main and upper levels provide an inviting and functional layout, ideal for families of all sizes.

Adding even more value, the fully finished basement features an additional bedroom, a full bathroom, and a versatile recreation space—perfect for movie nights, family gatherings, or a cozy retreat.

Located just minutes from schools, retail stores, and essential amenities, this home offers easy access to everything you need. A true highlight is the rare RV parking pad with back gate alley access, providing a secure space for your outdoor toys, trailers, or extra vehicles.

Don't miss this incredible opportunity to own a beautiful home in a quiet, family-friendly neighborhood!



Built in 2010

Essential Information

MLS® # A2205551

Price \$599,000

Bedrooms 4

Bathrooms	4.00
Full Baths	3
Half Baths	1
Square Footage	1,773
Acres	0.07
Year Built	2010
Type	Residential
Sub-Type	Detached
Style	2 Storey
Status	Active

Community Information

Address	1148 Windhaven Close Sw
Subdivision	Windsong
City	Airdrie
County	Airdrie
Province	Alberta
Postal Code	T4B 0T9

Amenities

Parking Spaces	3
Parking	Driveway, Front Drive, Garage Door Opener, Garage Faces Front, RV Access/Parking, Single Garage Attached
# of Garages	1

Interior

Interior Features	No Animal Home, No Smoking Home, Open Floorplan, Vinyl Windows
Appliances	Dishwasher, Dryer, Electric Range, Microwave, Range Hood, Refrigerator, Washer
Heating	Forced Air, Natural Gas
Cooling	None
Has Basement	Yes
Basement	Finished, Full

Exterior

Exterior Features	Other, Private Entrance, Private Yard
Lot Description	Back Lane, Rectangular Lot
Roof	Asphalt Shingle
Construction	Concrete, Vinyl Siding, Wood Frame

Foundation Poured Concrete

Additional Information

Date Listed March 26th, 2025
Days on Market 24
Zoning R1-L

Listing Details

Listing Office Real Broker

Data is supplied by Pillar 9â„¸ MLSÂ® System. Pillar 9â„¸ is the owner of the copyright in its MLSÂ® System. Data is deemed reliable but is not guaranteed accurate by Pillar 9â„¸. The trademarks MLSÂ®, Multiple Listing ServiceÂ® and the associated logos are owned by The Canadian Real Estate Association (CREA) and identify the quality of services provided by real estate professionals who are members of CREA. Used under license.