

\$565,000 - 132 Aspen Creek Crescent, Strathmore

MLS® #A2205282

\$565,000

5 Bedroom, 3.00 Bathroom, 1,273 sqft
Residential on 0.13 Acres

Aspen Creek, Strathmore, Alberta

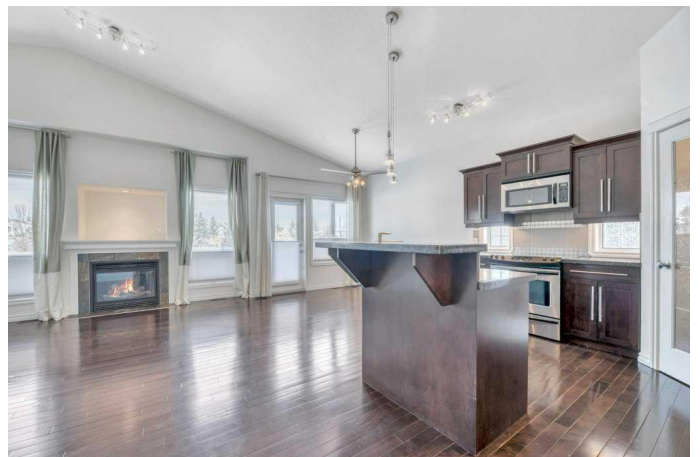
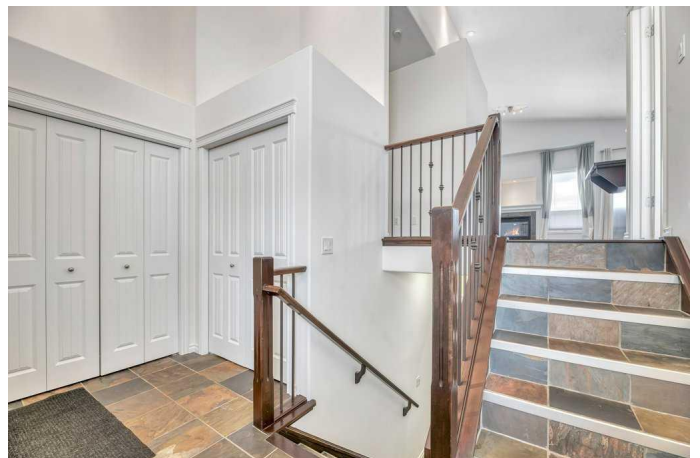
OPEN HOUSE SUNDAY, APRIL 6TH 2-4PM!

Pride of ownership is evident throughout this air-conditioned 5-bedroom, 3-bath home located in the sought-after community of Aspen Creek in Strathmore. With over 2,300 sqft of developed living space and backing onto the tranquil canal and greenspace, this home offers a peaceful setting paired with everyday functionality.

The main floor features an open-concept layout with vaulted ceilings, hardwood floors, and large windows that fill the space with natural light. The kitchen is equipped with upgraded granite countertops, wood shaker cabinetry, a corner pantry, and plenty of cupboard and counter space. The adjacent dining area leads to a spacious deck with serene views—perfect for morning coffee or evening BBQs. The cozy living room includes a gas fireplace, adding warmth to the heart of the home.

The primary bedroom offers a 4-piece ensuite and walk-in closet, while two additional bedrooms on the main floor provide space for family or guests. The fully finished basement includes two more bedrooms, both with egress windows, a large rec area, and a full 4-piece bath. The stylish polished acid-stained concrete flooring throughout the lower level adds a unique touch and durability.

Recent updates include a newer roof, newer



central A/C, and fresh paint throughout. This home is perfectly located in a quiet, family-friendly neighborhoodâ€”close to schools, parks, and all of Strathmoreâ€™s amenities.

A great opportunity to own a quality-built home in a beautiful setting with space for the whole family.

Built in 2007

Essential Information

| | |
|----------------|-------------|
| MLS® # | A2205282 |
| Price | \$565,000 |
| Bedrooms | 5 |
| Bathrooms | 3.00 |
| Full Baths | 3 |
| Square Footage | 1,273 |
| Acres | 0.13 |
| Year Built | 2007 |
| Type | Residential |
| Sub-Type | Detached |
| Style | Bi-Level |
| Status | Active |

Community Information

| | |
|-------------|--------------------------|
| Address | 132 Aspen Creek Crescent |
| Subdivision | Aspen Creek |
| City | Strathmore |
| County | Wheatland County |
| Province | Alberta |
| Postal Code | T1P 0A6 |

Amenities

| | |
|----------------|--|
| Parking Spaces | 4 |
| Parking | Concrete Driveway, Double Garage Attached, Insulated |
| # of Garages | 2 |

Interior

| | |
|-------------------|---|
| Interior Features | Granite Counters, High Ceilings, Jetted Tub, Kitchen Island, No Animal Home, No Smoking Home, Open Floorplan, Pantry, Soaking Tub, Vaulted Ceiling(s), Vinyl Windows, Walk-In Closet(s) |
| Appliances | Central Air Conditioner, Dishwasher, Dryer, Electric Oven, Garage Control(s), Microwave Hood Fan, Refrigerator, Washer |
| Heating | Forced Air |
| Cooling | Central Air |
| Fireplace | Yes |
| # of Fireplaces | 1 |
| Fireplaces | Gas |
| Has Basement | Yes |
| Basement | Finished, Full |

Exterior

| | |
|-------------------|---|
| Exterior Features | None |
| Lot Description | Back Yard, Backs on to Park/Green Space, Front Yard, Lawn, No Neighbours Behind, Views, Greenbelt |
| Roof | Asphalt Shingle |
| Construction | Wood Frame |
| Foundation | Poured Concrete |

Additional Information

| | |
|----------------|-----------------|
| Date Listed | April 3rd, 2025 |
| Days on Market | 15 |
| Zoning | R1 |

Listing Details

| | |
|----------------|-------------------------------|
| Listing Office | Century 21 Bamber Realty LTD. |
|----------------|-------------------------------|

Data is supplied by Pillar 9â„¢ MLS® System. Pillar 9â„¢ is the owner of the copyright in its MLS® System. Data is deemed reliable but is not guaranteed accurate by Pillar 9â„¢. The trademarks MLS®, Multiple Listing Service® and the associated logos are owned by The Canadian Real Estate Association (CREA) and identify the quality of services provided by real estate professionals who are members of CREA. Used under license.