

\$35,000 - 26, 665059 Range Road 230, Rural Athabasca County

MLS® #A2203116

\$35,000

0 Bedroom, 0.00 Bathroom,
Land on 0.27 Acres

N/A, Rural Athabasca County, Alberta

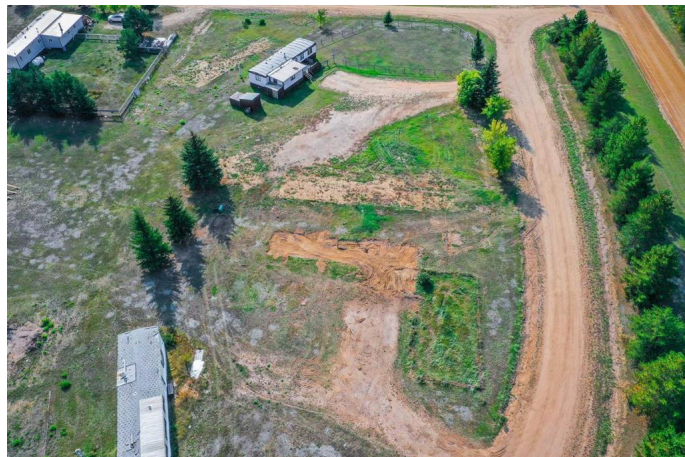
The perfect place to park the RV or mobile home with serviced lots starting at \$35,000.00! All lots are serviced with water, sewer, natural gas & power. Why pay the crazy RV rental prices when you can own your own land? Pine Meadow is a great location, just minutes from the town of Athabasca, close to the golf course, ball diamonds, Peace River trail and a quick drive to the Athabasca River or Calling Lake. The lots range from .25 of an acre to .35 of an acre, zoned MHP and ready for your residential or recreational development. Condo fees of \$215.00/mo apply. The Condo fees cover garbage pickup, maintenance and snow removal to common property. GST Applies

Essential Information

MLS® #	A2203116
Price	\$35,000
Bathrooms	0.00
Acres	0.27
Type	Land
Sub-Type	Residential Land
Status	Active

Community Information

Address	26, 665059 Range Road 230
Subdivision	N/A
City	Rural Athabasca County



County	Athabasca County
Province	Alberta
Postal Code	T9S 2A8

Amenities

Amenities	Park, Trash
-----------	-------------

Additional Information

Date Listed	March 17th, 2025
Days on Market	34
Zoning	MHP

Listing Details

Listing Office	ROYAL LEPAGE COUNTY REALTY
----------------	----------------------------

Data is supplied by Pillar 9â„¢ MLS® System. Pillar 9â„¢ is the owner of the copyright in its MLS® System. Data is deemed reliable but is not guaranteed accurate by Pillar 9â„¢. The trademarks MLS®, Multiple Listing Service® and the associated logos are owned by The Canadian Real Estate Association (CREA) and identify the quality of services provided by real estate professionals who are members of CREA. Used under license.