

# \$2,650,000 - 2620 Centre Street Ne, Calgary

MLS® #A2201816

**\$2,650,000**

0 Bedroom, 0.00 Bathroom,  
Commercial on 0.25 Acres

Tuxedo Park, Calgary, Alberta

Prime Development Opportunity â€” 0.25 Acre  
Lot on Centre Street North

An exceptional investment opportunity in the heart of Calgary! This rare 0.25-acre lot is ideally positioned just 6 minutes from downtown, offering unparalleled access to the cityâ€™s core. With high-density mixed-use zoning, this site is primed for a future development featuring main-floor retail and upper-level residential unitsâ€”perfect for capitalizing on Calgaryâ€™s growing demand for centrally located commercial and residential spaces.

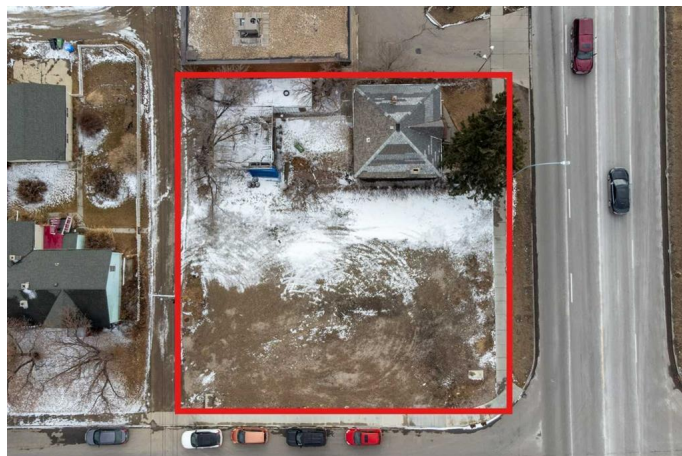
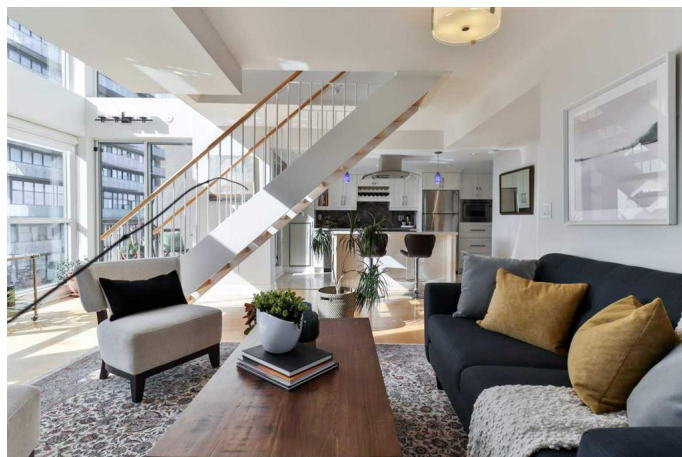
Centre Street North is a rapidly evolving corridor with increasing foot traffic, strong retail potential, and seamless connectivity to transit and major roadways. As Calgary continues to expand, this location offers investors and developers a strategic advantage in a high-demand market. Don't miss the chance to bring a visionary project to this thriving urban hub.

Inquire today to explore the potential of this prime development site!

Built in 1949

## Essential Information

MLS® #	A2201816
Price	\$2,650,000



Bathrooms	0.00
Acres	0.25
Year Built	1949
Type	Commercial
Sub-Type	Mixed Use
Status	Active

### **Community Information**

Address	2620 Centre Street Ne
Subdivision	Tuxedo Park
City	Calgary
County	Calgary
Province	Alberta
Postal Code	T2E 2V4

### **Additional Information**

Date Listed	March 13th, 2025
Days on Market	29
Zoning	MU-2

### **Listing Details**

Listing Office	Homecare Realty Ltd.
----------------	----------------------

Data is supplied by Pillar 9â,,ç MLSÂ® System. Pillar 9â,,ç is the owner of the copyright in its MLSÂ® System. Data is deemed reliable but is not guaranteed accurate by Pillar 9â,,ç. The trademarks MLSÂ®, Multiple Listing ServiceÂ® and the associated logos are owned by The Canadian Real Estate Association (CREA) and identify the quality of services provided by real estate professionals who are members of CREA. Used under license.