

\$400,000 - 439 Mt Sundance Landing W, Lethbridge

MLS® #A2201675

\$400,000

4 Bedroom, 3.00 Bathroom, 960 sqft

Residential on 0.10 Acres

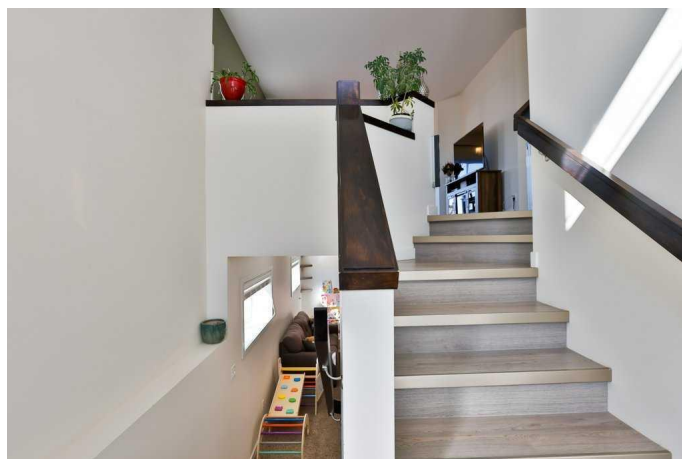
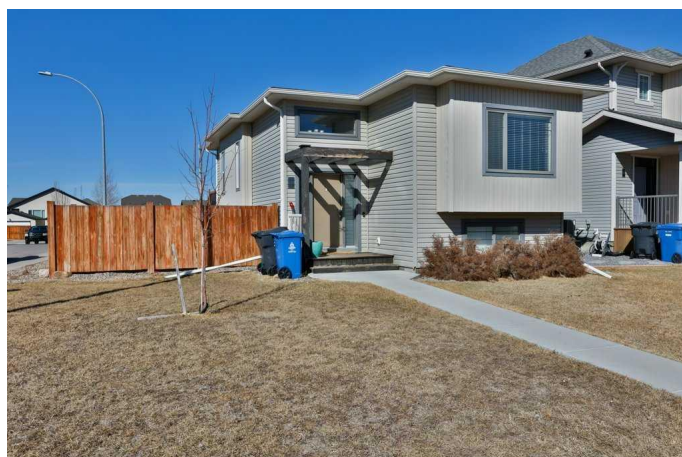
Sunridge, Lethbridge, Alberta

This fully developed bi-level is perfect for first-timers, revenue seekers, or if you are looking to downsize. Located in a low traffic, quiet, family friendly cul-de-sac close to schools, parks, walking paths and so much more. This home is filled with natural light through the large upper and lower level windows. Upstairs you'll find 9' ceilings, a large living room opening to the dining and kitchen area complete with quartz countertops, glass tile backsplash, and stainless steel finish appliances. This floor also boasts a large primary bedroom with 4 piece ensuite, 4 piece bath, and another good sized bedroom. The finished lower level conveniently has another 2 bedrooms, 4 piece bath, laundry, a large family room and storage area. The home's open design leaves nothing to waste, just a clean, well-lit, modern home. You'll find off street parking, and a nicely fenced yard with a good sized deck. Make sure you check out this well priced home asap.

Built in 2014

Essential Information

MLS® #	A2201675
Price	\$400,000
Bedrooms	4
Bathrooms	3.00
Full Baths	3
Square Footage	960



Acres	0.10
Year Built	2014
Type	Residential
Sub-Type	Detached
Style	Bi-Level
Status	Active

Community Information

Address	439 Mt Sundance Landing W
Subdivision	Sunridge
City	Lethbridge
County	Lethbridge
Province	Alberta
Postal Code	T1J 5J9

Amenities

Parking Spaces	6
Parking	Parking Pad, Off Street

Interior

Interior Features	Ceiling Fan(s), No Smoking Home, Pantry, See Remarks
Appliances	Other
Heating	Forced Air
Cooling	Central Air
Has Basement	Yes
Basement	Finished, Full

Exterior

Exterior Features	Private Yard, Rain Gutters
Lot Description	Back Lane, Back Yard, City Lot, Corner Lot, Cul-De-Sac, Landscaped, Lawn, See Remarks, Street Lighting
Roof	Asphalt Shingle
Construction	Vinyl Siding, Wood Frame
Foundation	Poured Concrete

Additional Information

Date Listed	March 17th, 2025
Days on Market	35
Zoning	R-CM

Listing Details

Listing Office RE/MAX REAL ESTATE - LETHBRIDGE

Data is supplied by Pillar 9â„¢ MLS® System. Pillar 9â„¢ is the owner of the copyright in its MLS® System. Data is deemed reliable but is not guaranteed accurate by Pillar 9â„¢. The trademarks MLS®, Multiple Listing Service® and the associated logos are owned by The Canadian Real Estate Association (CREA) and identify the quality of services provided by real estate professionals who are members of CREA. Used under license.