

\$199,999 - 101, 9800 Horton Road Sw, Calgary

MLS® #A2194258

\$199,999

2 Bedroom, 1.00 Bathroom, 802 sqft
Residential on 0.00 Acres

Haysboro, Calgary, Alberta

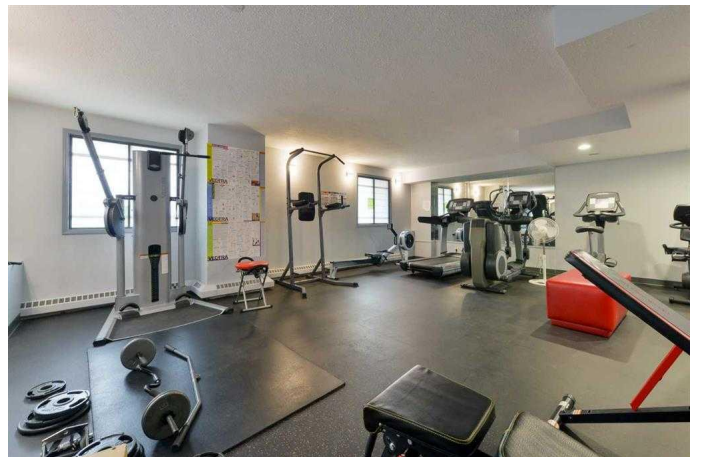
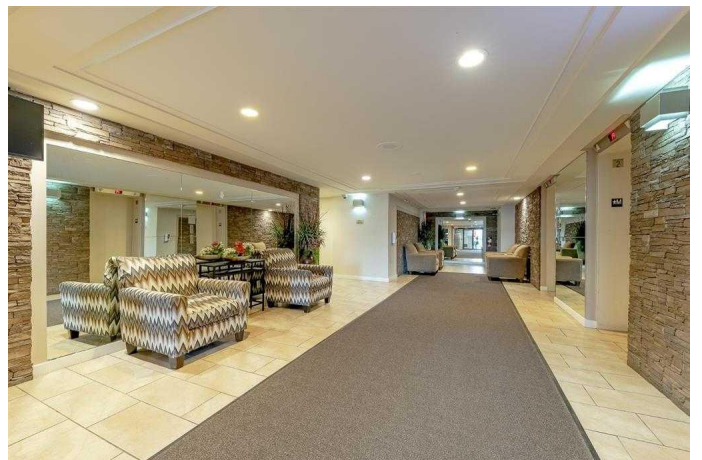
MOVE IN READY INVESTMENT - 800 Square Foot, 2 Bedroom Main Floor Apartment. Condo fees are \$679 and include all Utilities. One assigned underground heated parking stall. Laundry Room shared with only 2 other apartments. Well managed building with onsite concierge. There is a fitness room on the 3rd floor. An owners lounge on the main floor. Extra storage available for winter tires and bikes. Lots to like in unit 101 and the building at 9800 Horton Rd SW. Contact your Realtor for more information on this investment opportunity or your next home.

Built in 1982

Essential Information

MLS® #	A2194258
Price	\$199,999
Bedrooms	2
Bathrooms	1.00
Full Baths	1
Square Footage	802
Acres	0.00
Year Built	1982
Type	Residential
Sub-Type	Apartment
Style	High-Rise (5+)
Status	Active

Community Information



Address	101, 9800 Horton Road Sw
Subdivision	Haysboro
City	Calgary
County	Calgary
Province	Alberta
Postal Code	T2V 5B5

Amenities

Amenities	Coin Laundry, Elevator(s), Fitness Center, Garbage Chute, Party Room, Storage
Parking Spaces	1
Parking	Secured, Underground
# of Garages	1

Interior

Interior Features	See Remarks
Appliances	Dishwasher, Refrigerator, Stove(s)
Heating	Baseboard, Boiler
Cooling	None
# of Stories	19

Exterior

Exterior Features	None
Construction	Brick, Concrete

Additional Information

Date Listed	February 19th, 2025
Days on Market	44
Zoning	DC

Listing Details

Listing Office	eXp Realty
----------------	------------

Data is supplied by Pillar 9â„¢ MLSÂ® System. Pillar 9â„¢ is the owner of the copyright in its MLSÂ® System. Data is deemed reliable but is not guaranteed accurate by Pillar 9â„¢. The trademarks MLSÂ®, Multiple Listing ServiceÂ® and the associated logos are owned by The Canadian Real Estate Association (CREA) and identify the quality of services provided by real estate professionals who are members of CREA. Used under license.