

\$1,000,000 - 921 36a Street Nw, Calgary

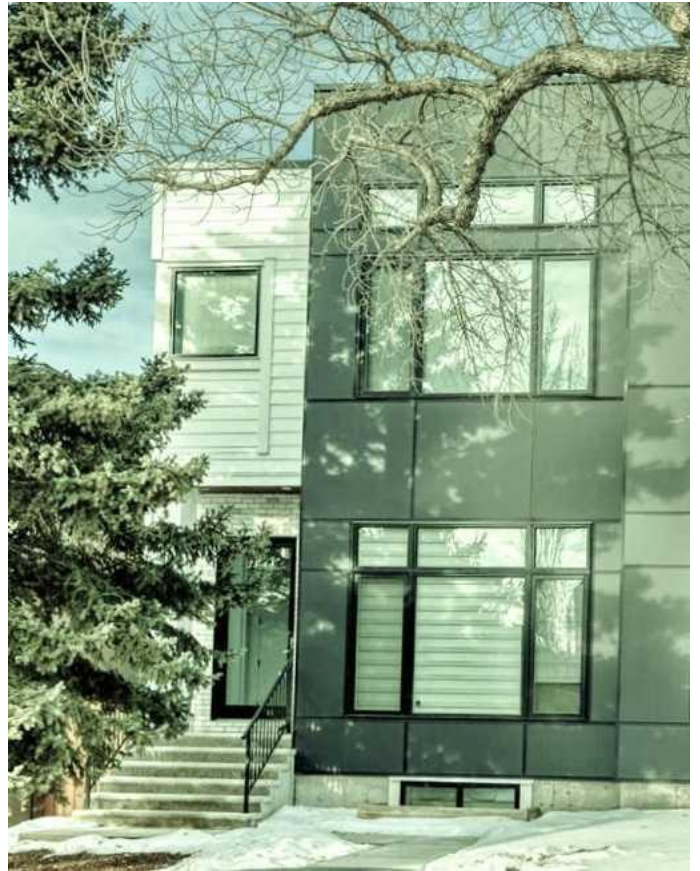
MLS® #A2192554

\$1,000,000

4 Bedroom, 2.00 Bathroom, 1,897 sqft
Residential on 0.07 Acres

Parkdale, Calgary, Alberta

EXCELLENT LOCATION! Semi detach half duplex built 2018. and a huge quartz Island.Wide plank white Oak Hardwood floors.tile,10 ft ceilings. Custom built in cabinetry on all floors.Amazing main floor with open Concept and dining room areas.Fireplace in living area staircase which leads to the Upper level features a large Master Suite will an amazing bathroom,double Sink and walk in closet.Two more bedrooms, main bath and laundry area. wide hall ways, Judicial Sale



Built in 2018

Essential Information

MLS® #	A2192554
Price	\$1,000,000
Bedrooms	4
Bathrooms	2.00
Full Baths	2
Square Footage	1,897
Acres	0.07
Year Built	2018
Type	Residential
Sub-Type	Semi Detached
Style	2 Storey, Side by Side
Status	Active

Community Information

Address 921 36a Street Nw

Subdivision	Parkdale
City	Calgary
County	Calgary
Province	Alberta
Postal Code	T2N 3B2

Amenities

Parking Spaces	2
Parking	Double Garage Detached
# of Garages	2

Interior

Interior Features	Quartz Counters
Appliances	None
Heating	Forced Air, Natural Gas
Cooling	None
Fireplace	Yes
# of Fireplaces	1
Fireplaces	Electric
Has Basement	Yes
Basement	Finished, Full

Exterior

Exterior Features	None
Lot Description	Back Lane
Roof	Asphalt Shingle
Construction	Mixed
Foundation	Poured Concrete

Additional Information

Date Listed	February 4th, 2025
Days on Market	60
Zoning	R-CG

Listing Details

Listing Office	Five Star Realty
----------------	------------------

Data is supplied by Pillar 9â„¢ MLSÂ® System. Pillar 9â„¢ is the owner of the copyright in its MLSÂ® System. Data is deemed reliable but is not guaranteed accurate by Pillar 9â„¢. The trademarks MLSÂ®, Multiple Listing ServiceÂ® and the associated logos are owned by The Canadian Real Estate Association (CREA) and identify the quality of services provided by real estate professionals who are members of CREA. Used under license.