

\$439,900 - Se-25-72-5-w6, Rural Grande Prairie No. 1, County of

MLS® #A2192321

\$439,900

0 Bedroom, 0.00 Bathroom,
Land on 111.35 Acres

NONE, Rural Grande Prairie No. 1, County of,
Alberta

****\$4200**** annual surface lease revenue. Nice parcel of farmland 15km out of Grande Prairie. This land is open and could be used for farmland, grazing, hay or a large parcel for an acreage. The convenient location is really hard to come by this close to the city. There are good wells in the area. Contact your agent with any questions or more details.



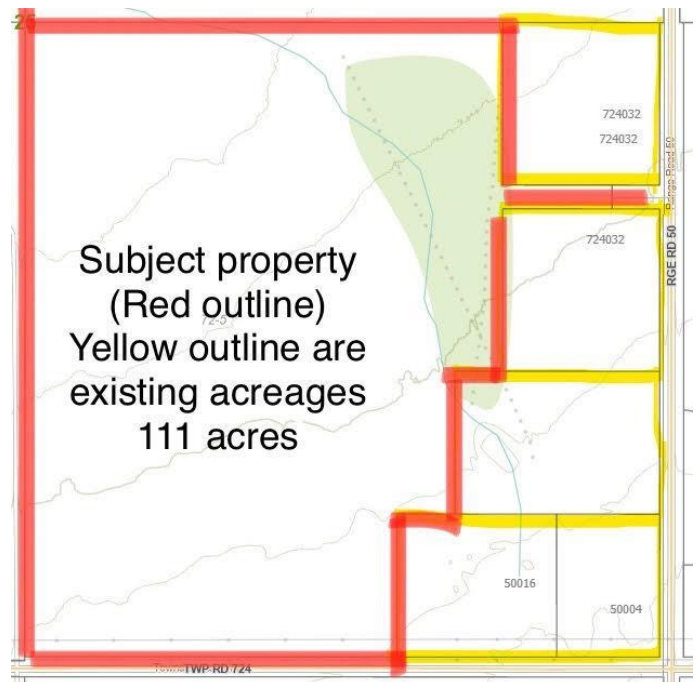
Essential Information

| | |
|-----------|------------------|
| MLS® # | A2192321 |
| Price | \$439,900 |
| Bathrooms | 0.00 |
| Acres | 111.35 |
| Type | Land |
| Sub-Type | Residential Land |
| Status | Active |

Community Information

| | |
|-------------|---------------------------------------|
| Address | Se-25-72-5-w6 |
| Subdivision | NONE |
| City | Rural Grande Prairie No. 1, County of |
| County | Grande Prairie No. 1, County of |
| Province | Alberta |
| Postal Code | T0H 3C0 |

Additional Information



| | |
|----------------|--------------------|
| Date Listed | February 4th, 2025 |
| Days on Market | 75 |
| Zoning | AG |

Listing Details

| | |
|----------------|------------------------------|
| Listing Office | Grassroots Realty Group Ltd. |
|----------------|------------------------------|

Data is supplied by Pillar 9â„¢ MLS® System. Pillar 9â„¢ is the owner of the copyright in its MLS® System. Data is deemed reliable but is not guaranteed accurate by Pillar 9â„¢. The trademarks MLS®, Multiple Listing Service® and the associated logos are owned by The Canadian Real Estate Association (CREA) and identify the quality of services provided by real estate professionals who are members of CREA. Used under license.