

\$355,000 - 102, 20 Cuendet Industrial Way, Sylvan Lake

MLS® #A2113223

\$355,000

0 Bedroom, 0.00 Bathroom,
Commercial on 0.00 Acres

Beju Industrial Park, Sylvan Lake, Alberta

LOCATION LOCATION, easy access to Highway 20 - this bay offers 2400 sq ft of main floor work space, front and rear 14ft overhead doors also upper mezzanine with 1024 sq ft, including reception area, office and washroom. Outside you will find an abundance of gated, shared parking. Your business will love it here.

Built in 2012

Essential Information

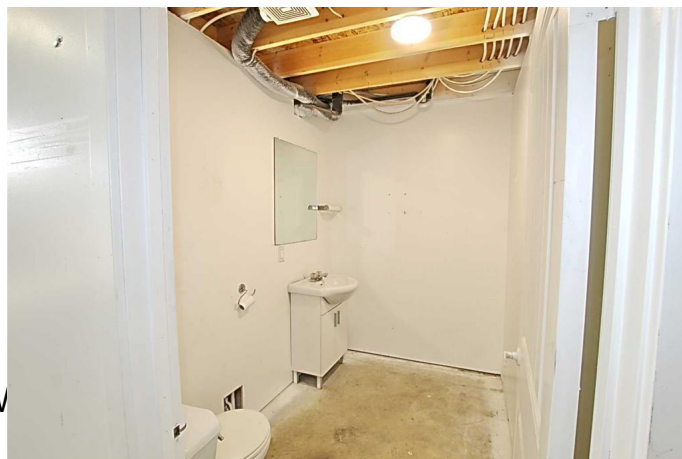
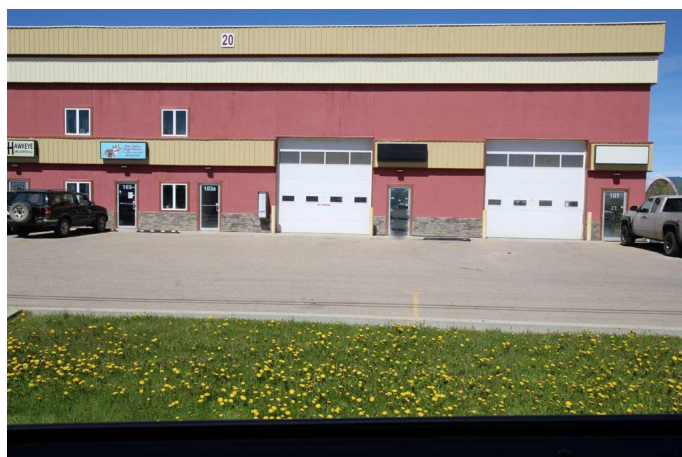
MLS® #	A2113223
Price	\$355,000
Bathrooms	0.00
Acres	0.00
Year Built	2012
Type	Commercial
Sub-Type	Industrial
Status	Active

Community Information

Address	102, 20 Cuendet Industrial W
Subdivision	Beju Industrial Park
City	Sylvan Lake
County	Red Deer County
Province	Alberta
Postal Code	T4S 2J8

Additional Information

Date Listed	March 7th, 2024
-------------	-----------------



Days on Market 408
Zoning I1

Listing Details

Listing Office RE/MAX real estate central alberta

Data is supplied by Pillar 9â„¢ MLSÂ® System. Pillar 9â„¢ is the owner of the copyright in its MLSÂ® System. Data is deemed reliable but is not guaranteed accurate by Pillar 9â„¢. The trademarks MLSÂ®, Multiple Listing ServiceÂ® and the associated logos are owned by The Canadian Real Estate Association (CREA) and identify the quality of services provided by real estate professionals who are members of CREA. Used under license.